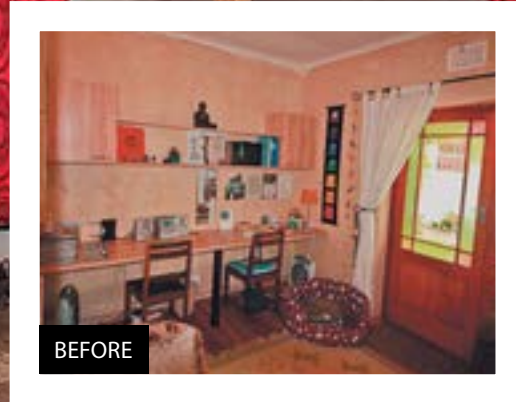


# GRAND OPENING

Wallpaper, quirky upholstery and a lime-wash paint technique has transformed a dark and dated entrance hall



The wallpaper is Beetle Damask, colour White on Linen, from Design Team. The chairs were custom-made by Beautiful Spaces and upholstered in Shield, colour Fuchsia on Masala, from Design Team. Wooden pencil holder from Big Blue. Sweatheart and Retro umbrellas (excluding black) from Design Team.

TEXT AND STYLING MARIAN VAN WYK PHOTOGRAPHS JUSTIN PATRICK

**“MY ENTRANCE HALL, WHICH DOUBLES UP AS A HOME OFFICE, WAS** so dull and uninviting that I was spending less and less time here,” says the owner.

**HOW THIS ROOM WENT FROM DARK AND DATED TO LIGHT AND AIRY** “As the very first room guests see when they arrive, the entrance hall should be a welcoming space,” says the owner, who asked interior designer Kimberley Richmond of Beautiful Spaces to revamp the room without buying new furniture.

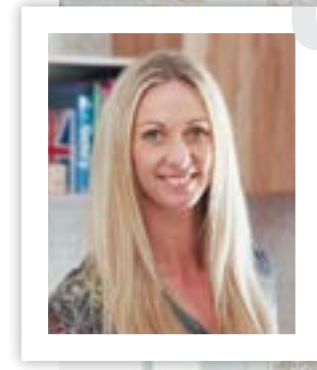
Kimberley started out by having the wooden doors and floors lime-washed. “Lime-washing totally transforms older homes as it makes the interiors much lighter,” she explains.

“The owner and I decided on red and fuchsia accents, but the whole scheme had to work around a classic wingback chair that she inherited from her mother,” says Kimberley. Mindful that it shouldn’t clash with the chair’s floral upholstery, Kimberley suggested a wallpaper with a subtle, contemporary motif.

The lighting was also redesigned; downlights now illuminate the desk area, while a low pendant provides both ambient and functional light in the reading area.

They kept the existing cabinetry and painted an occasional table red to inject some bright colour. Kimberley replaced the dark wooden desk chairs with upholstered versions, which are more comfortable.

**“NOW MY ENTRANCE HALL** feels like an actual room where I want to spend time. My furniture has come alive; it’s a great welcome to guests and working from home is a pleasure now!” the owner enthuses. **GH**



FOR MORE GREAT IDEAS  
Visit our online makeover section at [gardenandhome.co.za](http://gardenandhome.co.za)



**THIS PAGE, CLOCKWISE FROM TOP:** ● Kimberley Richmond of Beautiful Spaces. ● An heirloom chair and a contemporary pendant create a cosy reading corner. The Union Jack kelim, from Weylandts, is a nod to the owner’s British heritage. The cushion is made up in Bukhara fabric, colour Fuchsia on Orange, from Design Team. Jug from Nap Living. ● Wooden candle block (used as a book end) from Nap Living. ● Mug from Woolworths. Pencil holder from Prêt-à-Pot.

**SOURCES** Beautiful Spaces 078 279 3527 **Big Blue** bigblue.co.za **Design Team** designteamfabrics.co.za **Nap Living** napliving.co.za **Prêt-à-Pot** pret-a-pot.com **Weylandts** weylandts.co.za **Woolworths** woolworths.co.za