

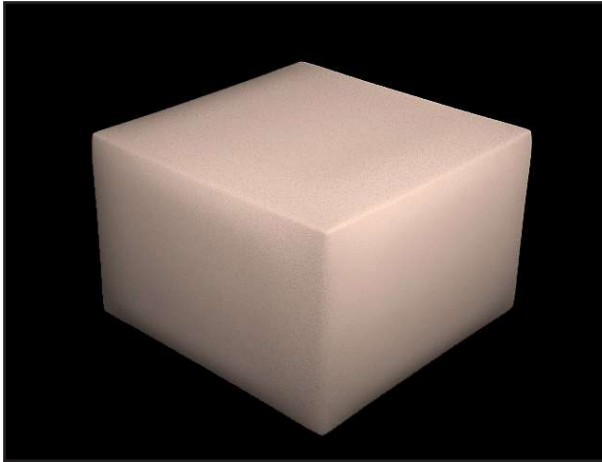
## OTTOMAN DESIGNS



### SMALL ROUND OTTOMAN:

Size: DIA 600 X H 400  
With wooden tapered cylinder feet  
Piping on diameter  
Fabric (plain) - 1.5m

TOTAL: R1600,00



### SQUARE OTTOMAN:

Size: W 900 X D 900 X H 400  
Topstitch detail  
Fabric (plain) - 2m

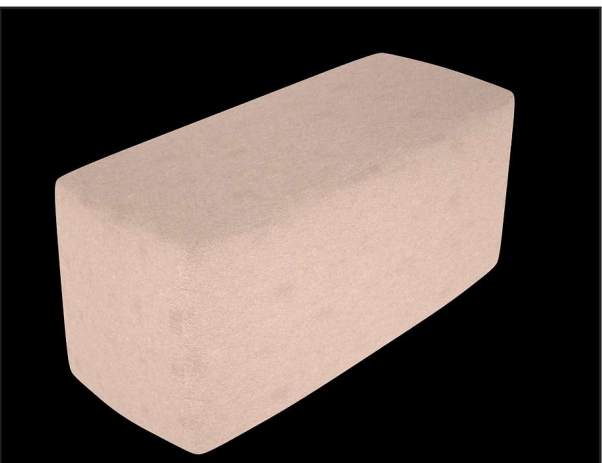
TOTAL: R1540,00



### DEEP BUTTONED SQUARE OTTOMAN:

Size: W 700 X D 700 X H 400  
Wooden feet  
Deep button on top with seat part stitched  
Topstitch detail  
Fabric (plain) - 2m

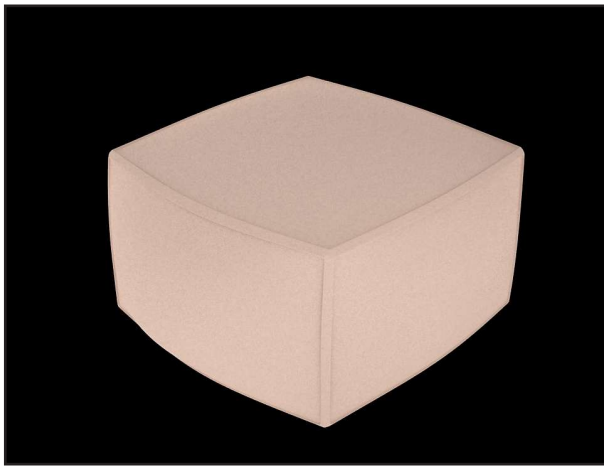
TOTAL: R2580,00



### RECTANGULAR LONG PLAIN OTTOMAN:

Size: L 1400 X W500 X H 450  
Topstitch detail  
Fabric (plain) - 2m

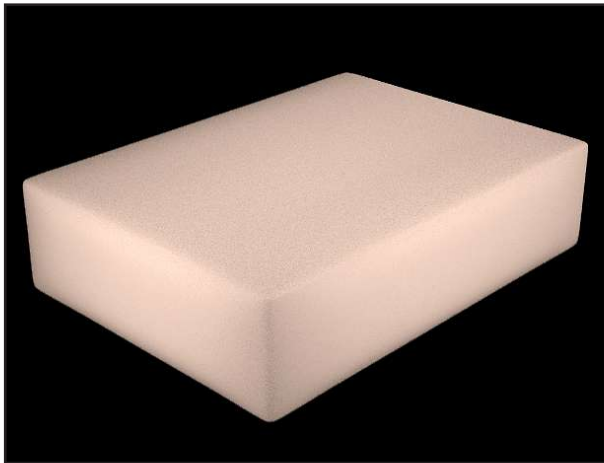
TOTAL: R1990,00



#### POUFFE OTTOMAN:

Size: L 700 X W 700 X H 400  
With piping  
Fabric (plain) - 1.5m

TOTAL: R1570,00



#### RECTANGULAR PLAIN BOX:

Size: L 1600 X W 700 X H 400  
Topstitch detail  
Fabric (plain) - 2m

TOTAL: R1990,00

#### QUOTING:

Beautiful Furniture designs would like to make the process of ordering as easy as possible. Any additional information you would like us to quote on please do not hesitate to ask.

1. SCOTCH GUARDING - TO BE QUOTED SEPARATELY
2. SIZE VARIATION - PLEASE EMAIL REQUIRED SIZES TO QUOTE ON
3. DIFFERENT FABRIC - EITHER WE CAN ASSIST YOU IN SOURCING FABRIC OR YOU CAN SUPPLY THE DESIGN AND FABRIC HOUSE AND WE WILL QUOTE ACCORDINGLY WITH THE NEW FABRIC. PLEASE ALLOW 2 - 5 WORKING DAYS TO REQUOTE ON NEW ITEMS.
4. DELIVERY TO BE QUOTED SEPARATELY. CURRENTLY DELIVERY ONLY TO THE WESTERN CAPE. ANY DELIVERY OUTSIDE THE WESTERN CAPE WILL HAVE TO BE ARRANGED BY THE CLIENT. ANY ADDITIONAL PACKAGE QUOTE WILL HAVE TO BE GIVEN FOR LONG DISTANCES.

#### DELIVERY COSTS:

ZONE 1: 0 - 20KM R450 + VAT  
ZONE 2: 20 - 50KM R550 + VAT  
ZONE 3: 50 - 75KM R750 + VAT  
ZONE 4: 75 - 100KM R1000 + VAT

OUTSIDE OF THIS AREA WILL HAVE TO BE QUOTED ON SEPARATELY. PRICES FOR DELIVERY BASED ON SINGLE ITEMS AND SMALL LOADS. LARGER QUANTITIES WILL ALSO NEED TO BE REQUOTED ON FOR BIGGER TRANSPORT REQUIREMENTS.

#### FURNITURE TIMELINES:

UPHOLSTERY: 4 - 6 WEEKS  
BEDSIDE TABLES: 4 WEEKS  
CARPENTRY: 6 - 8 WEEKS